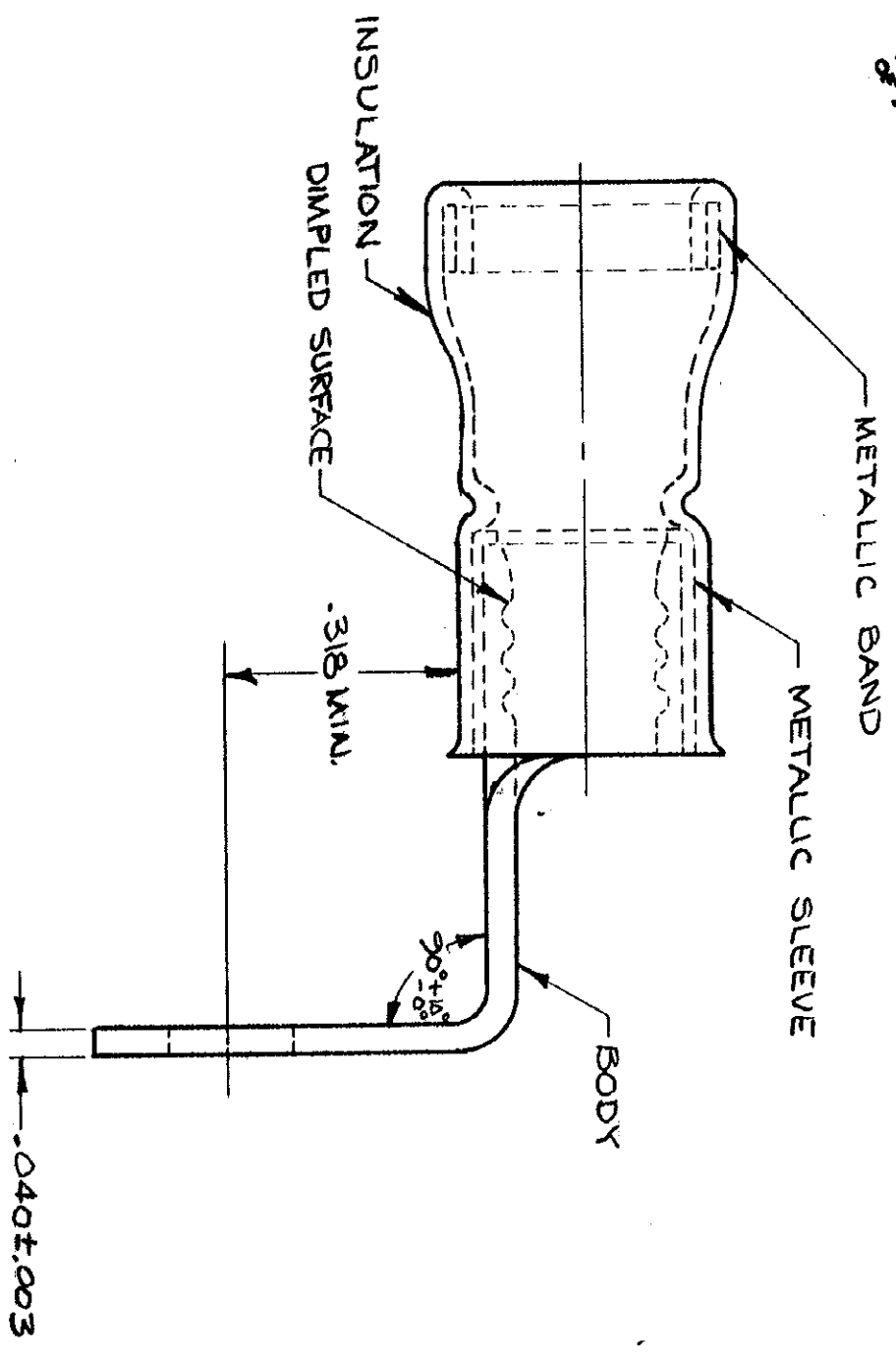


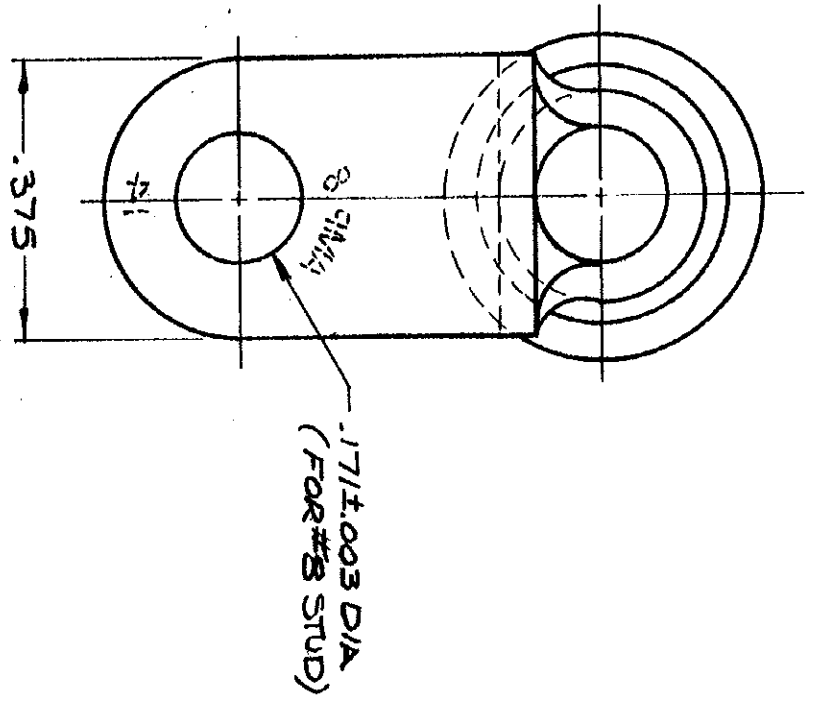
DRAWING MADE IN THIRD ANGLE PROJECTION

© COPYRIGHT 1978 BY AMP INCORPORATED, HARRISBURG, PA.
 ALL INTERNATIONAL RIGHTS RESERVED. AMP INCORPORATED PRODUCTS
 COVERED BY U. S. AND FOREIGN PATENTS AND/OR PATENTS PENDING.

ALL DIMENSIONS ARE IN INCHES
 UNLESS OTHERWISE SPECIFIED
 TOLERANCES ON:
 DECIMALS ±.008
 ANGLES ±5°



FOR .298 MAX DIA. WIRE INSULATION



P		E		Z		L		R		E		D		I		S	
REV	DATE	BY	CHKD	APPD	DESCRIPTION	ZONE	LTR	REV	DATE	BY	CHKD	APPD	DESCRIPTION	LOC	DIST	DATE	BY
1	1-3-78	CE			NPS 77-0307	0								G			
2	4/17/79	JT			REV. PER P-8347	A											
3	5-9-80	JT			REV. PER G-4680	B											

BODY: COPPER (QQ-C-576)	
INSULATION: PVC COLOR: RED	
METALLIC SLEEVE: COPPER (QQ-C-576)	54575-1
METALLIC BAND: STEEL QQ-S-698 ASTM A109	
MATERIAL & FINISH	PART NO

UNLESS OTHERWISE SPECIFIED DIMENSIONS ARE IN INCHES. TOLERANCES ON: DECIMALS ±.008 ANGLES ±5°		CONTRACT NO 15-78		NAME WIRE TERMINAL	
MATERIAL SEE TABLE		DR P. H. HALL		AMP INCORPORATED Harrisburg, Pa.	
FINISH SEE TABLE		CHK M. HALL		AMP LI-BOND-RING TONGUE - 90° BENT	
		APPD 1-4-78		WIRE SIZE: #8	
		DSGN APPD D. HALL		SCALE 4:1	
		OTHER APPD		SIZE B	
				CODE IDENT NO 00779	
				DRAWING NO 54575	
				SHEET 1 of 1	

CUSTOMER DRAWING

AMP 1470-15 (7-73)